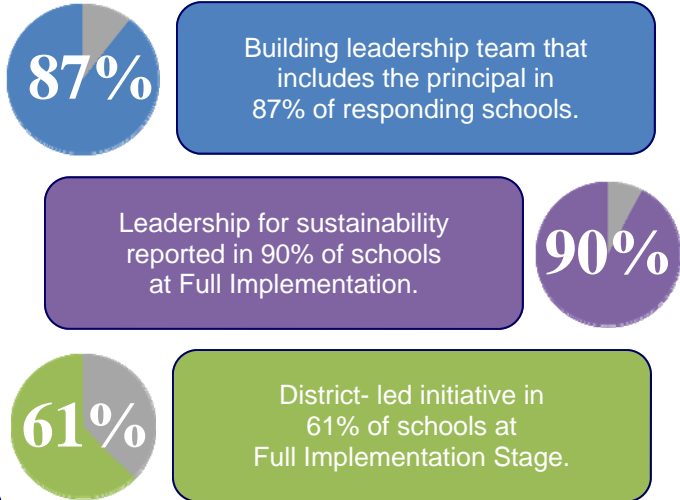




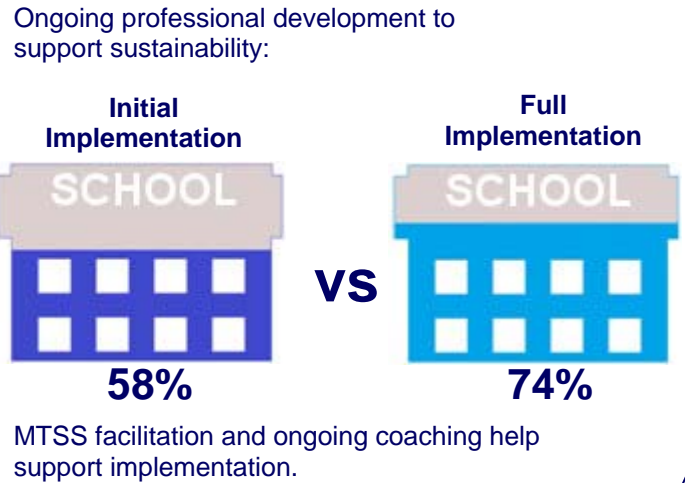
# MTSS IMPLEMENTATION

## What does it take?

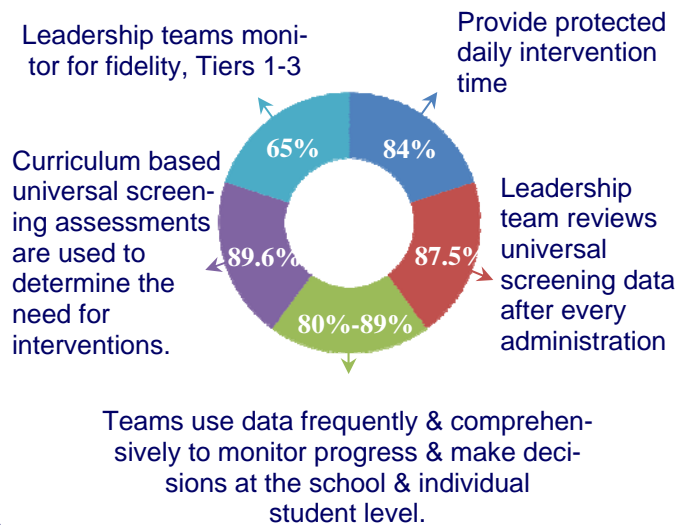
### Leadership



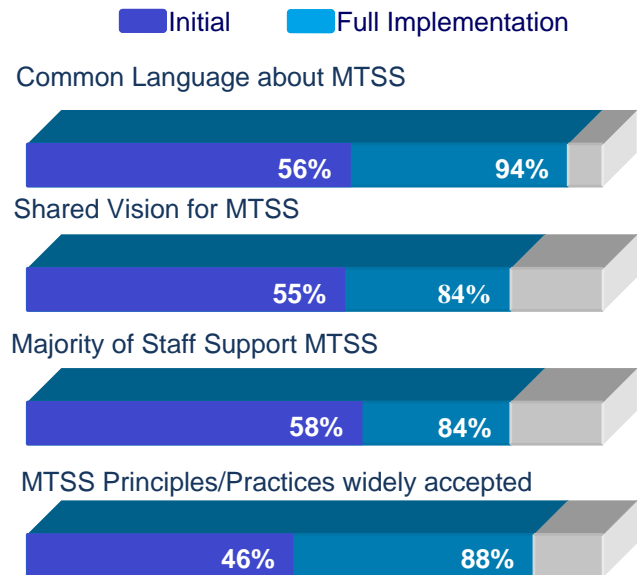
### Professional Development



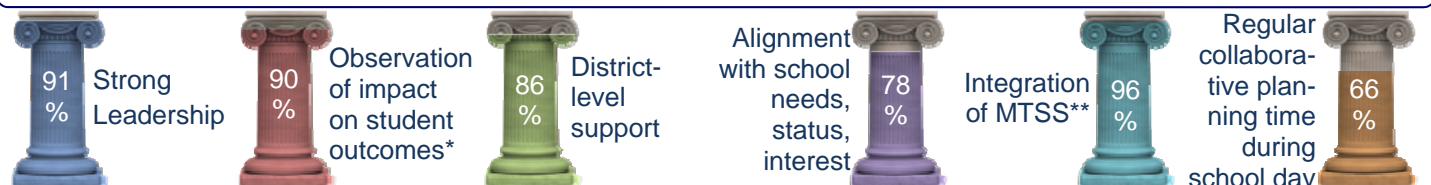
### High Quality Core Curriculum, Assessment, and Instruction



### Empowering Culture



### Support for Implementation



\*Increase in universal screening benchmarks & state assessment scores; decrease in office discipline & special ed. referrals

\*\*96% of schools at Full Implementation report integration of MTSS with other school improvements vs 62% Initial Implementation Schools

The contents of this resource were developed under an agreement from the Federal Department of Education to the Kansas State Department of Education. However, the contents do not necessarily represent the policy of the Department of Education, and endorsement by the Kansas State Department of Education or the Federal Government should not be assumed. Kansas MTSS is funded through Part B funds administered by the Kansas State Department of Education's Early Childhood, Special Education and Title Services. Keystone Learning Services does not discriminate on the basis of race, color, national origin, sex, disability, or age in this program and activities. The following person has been designated to handle inquiries regarding the non-discrimination policies: Keystone Learning Services Executive Director, 500 E. Sunflower Blvd, Ozawkie, KS 66070, 785-876- 2214.